

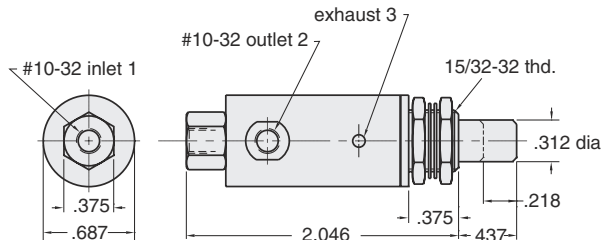
MINIATURE PRESSURE REGULATORS



Materials: brass body, Buna-N seals, stainless steel stem & spring

MAR-1C

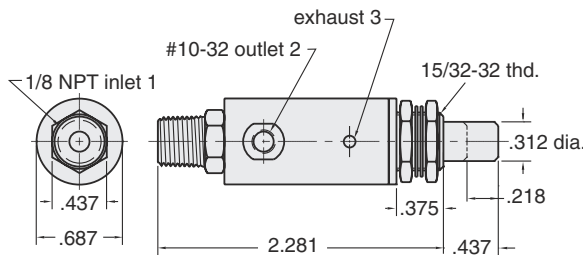
Normally closed 3-way piston type valve with variable pressure output



Medium: air
Plunger Travel: 7/32"
Input Pressure: input - 150 psig max.
 output - 100 psig max.
Air Flow: @50 psig - 3 SCFM
 @100 psig - 5 SCFM
Force For Full Stem Travel: 25 lb nominal
Mounting: 15/32-32 thread
 Nut and lockwashers furnished
Ports: Inlet - 10-32, Outlet - 10-32
Exhaust: To atmosphere through body hole
Temperature Range: 32° to 230° F
Operation: As plunger is depressed pressure increases proportionally to the travel; when plunger is released the input is closed and the output pressure is exhausted to atmosphere

MAR-1CP

Normally closed 3-way piston type valve with variable pressure output



Medium: air
Plunger Travel: 7/32"
Input Pressure: input - 150 psig max.
 output - 100 psig max.
Air Flow: @50 psig - 3 SCFM
 @100 psig - 5 SCFM
Force For Full Stem Travel: 25 lb nominal
Mounting: 15/32-32 thread
 Nut and lockwashers furnished
Ports: Inlet - 1/8 NPT, Outlet - 10-32
Exhaust: To atmosphere through body hole
Temperature Range: 32° to 230° F
Operation: As plunger is depressed pressure increases proportionally to the travel; when plunger is released the input is closed and the output pressure is exhausted to atmosphere

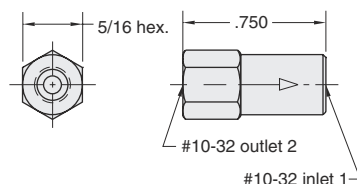
CHECK VALVES

Three varieties of check valves are offered by Clippard. Each permits flow in one direction only. All have bright-dipped brass bodies that provide in-line mounting, Buna-N seals and stainless steel springs as standard. The MCV-2 has 10-32 ports and a "duckbill" seal. The MCV-1 series has 10-32 ports and a brass poppet. The MJCV-1 series has 1/8 NPT ports and a Delrin® poppet.



MCV-2

Miniature check valve "duckbill" type, permits flow in one direction only, low cracking pressure



Medium: air
Input Pressure: 100 psig max.
Air Flow: @50 psig - 1 SCFM
Pressure To Crack: 1 psi
Pressure To Fully Open: 2.5
Mounting: direct or inline
Ports: Inlet - 10-32, Outlet - 10-32
Flow Direction: Arrow on valve body indicates direction of flow
Temperature Range: 32° to 230° F
Note: Not intended for pressure relief



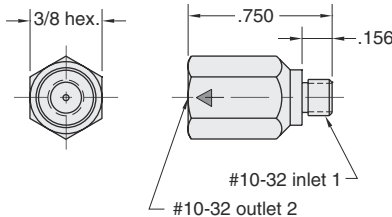
10-32 CHECK VALVES

MCV-1

MCV-1



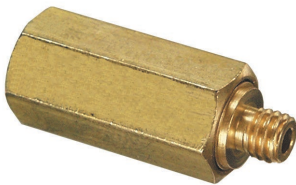
Miniature poppet type check valve
Permits flow in one direction only



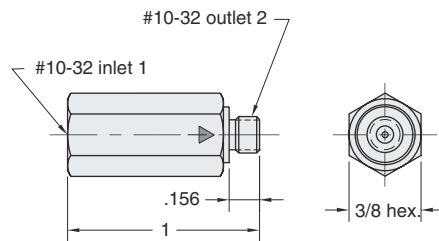
Medium: air or hydraulic
Input Pressure: 300 psig max.
Air Flow: @50 psig - 6.5 SCFM
 @100 psig - 11.5 SCFM
Pressure To Open: Cracks at approx. 1/2 psig
Mounting: direct or inline
Ports: Inlet - 10-32, Outlet - 10-32
Flow Direction: Arrow on valve body indicates direction of flow
Temperature Range: 32° to 230° F
Note: Not intended for pressure relief

MCV-1AB

MCV-1AB



Miniature poppet type check valve
Permits flow in one direction only



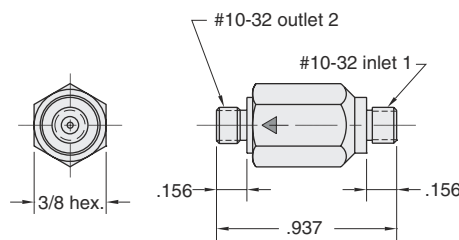
Medium: air or hydraulic
Input Pressure: 300 psig max.
Air Flow: @50 psig - 6.5 SCFM
 @100 psig - 11.5 SCFM
Pressure To Open: Cracks at approx. 1/2 psig
Mounting: direct or inline
Ports: Inlet - 10-32, Outlet - 10-32
Flow Direction: Arrow on valve body indicates direction of flow
Temperature Range: 32° to 230° F
Note: Not intended for pressure relief

MCV-1AA

MCV-1AA



Miniature poppet type check valve
Permits flow in one direction only



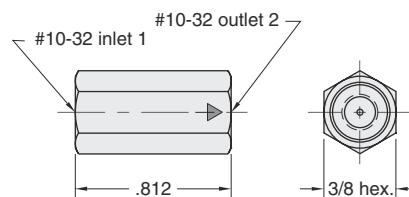
Medium: air or hydraulic
Input Pressure: 300 psig max.
Air Flow: @50 psig - 6.5 SCFM
 @100 psig - 11.5 SCFM
Pressure To Open: Cracks at approx. 1/2 psig
Mounting: direct or inline
Ports: Inlet - 10-32, Outlet - 10-32
Flow Direction: Arrow on valve body indicates direction of flow
Temperature Range: 32° to 230° F
Note: Not intended for pressure relief

MCV-1BB

MCV-1BB



Miniature poppet type check valve
Permits flow in one direction only



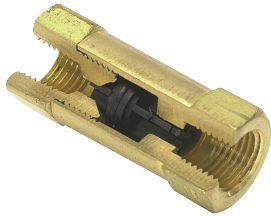
Medium: air or hydraulic
Input Pressure: 300 psig max.
Air Flow: @50 psig - 6.5 SCFM
 @100 psig - 11.5 SCFM
Pressure To Open: Cracks at approx. 1/2 psig
Mounting: direct or inline
Ports: Inlet - 10-32, Outlet - 10-32
Flow Direction: Arrow on valve body indicates direction of flow
Temperature Range: 32° to 230° F
Note: Not intended for pressure relief

1/8 NPT CHECK VALVES

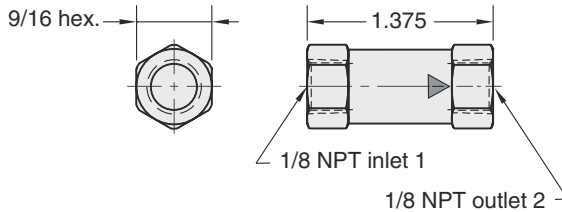


Materials: brass body, Buna-N seals, stainless steel stem & spring

MJCV-1



Miniature poppet type check valve
Permits flow in one direction only

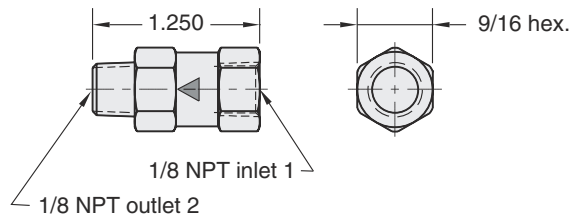


Medium: air or hydraulic
Input Pressure: 300 psig max.
Air Flow: @50 psig - 20 SCFM
@100 psig - 36 SCFM
Pressure To Open: Cracks at approx. 1/2 psig
Mounting: direct or inline
Ports: Inlet - 1/8 NPT, Outlet - 1/8 NPT
Flow Direction: Arrow on valve body indicates direction of flow
Temperature Range: 32° to 230° F
Note: Not intended for pressure relief

MJCV-1AB



Miniature poppet type check valve
Permits flow in one direction only

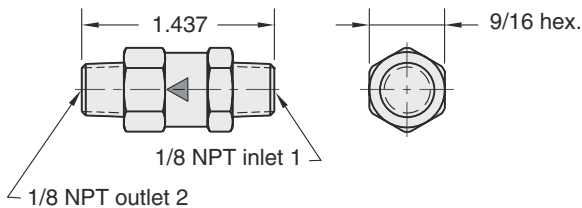


Medium: air or hydraulic
Input Pressure: 300 psig max.
Air Flow: @50 psig - 20 SCFM
@100 psig - 36 SCFM
Pressure To Open: Cracks at approx. 1/2 psig
Mounting: direct or inline
Ports: Inlet - 1/8 NPT, Outlet - 1/8 NPT
Flow Direction: Arrow on valve body indicates direction of flow
Temperature Range: 32° to 230° F
Note: Not intended for pressure relief

MJCV-1AA



Miniature poppet type check valve
Permits flow in one direction only

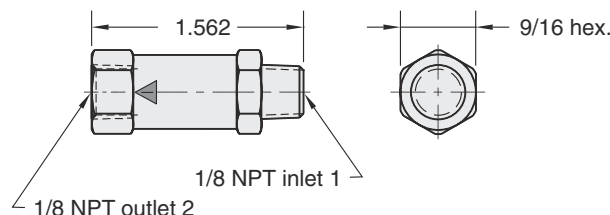


Medium: air or hydraulic
Input Pressure: 300 psig max.
Air Flow: @50 psig - 20 SCFM
@100 psig - 36 SCFM
Pressure To Open: Cracks at approx. 1/2 psig
Mounting: direct or inline
Ports: Inlet - 1/8 NPT, Outlet - 1/8 NPT
Flow Direction: Arrow on valve body indicates direction of flow
Temperature Range: 32° to 230° F
Note: Not intended for pressure relief

MJCV-1BA



Miniature poppet type check valve
Permits flow in one direction only



Medium: air or hydraulic
Input Pressure: 300 psig max.
Air Flow: @50 psig - 20 SCFM
@100 psig - 36 SCFM
Pressure To Open: Cracks at approx. 1/2 psig
Mounting: direct or inline
Ports: Inlet - 1/8 NPT, Outlet - 1/8 NPT
Flow Direction: Arrow on valve body indicates direction of flow
Temperature Range: 32° to 230° F
Note: Not intended for pressure relief